

# Process

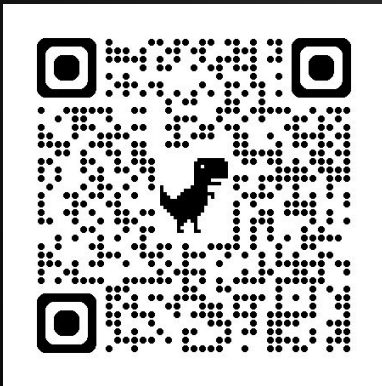
1. Student Violation and Subsequent Investigation takes place- 3 Day Suspension Issued
2. Informal Hearing Conducted within 3 days of suspension
3. Principal Determination
  - a. student returns to school OR
  - b. additional suspension issued
4. Principal Referral
  - a. AEDY Referral made (2 additional days of suspension)
  - b. Refer case to Superintendent for Expulsion Hearing (7-10 additional days of suspension)
    - i. Some examples of behaviors that may lead to Expulsion consideration
      1. If a student has previously been in the AEDY program for the same or similar infraction
      2. Student has committed an act of violence resulting in serious bodily harm (permanent) to a student or staff member
5. Expulsion Hearing Conducted

# ALTERNATIVE EDUCATION FOR DISRUPTIVE YOUTH PLACEMENT

## Monitored by PDE and Pattan

- Does not require a formal board hearing
- Does require an informal hearing at the school level with the parent or guardian to review the outcome of the investigation
- At conclusion of hearing, one potential outcome is that the Principal's Determination is given to the parent and AEDY Referral is made:

- Weapons, violence leading to bodily harm, drugs/alcohol
- 3rd suspension of 3 days or more within a year and research based intervention have been implemented with fidelity between the periods of exclusion from school



# Current preventative supports to students in conjunction with the Office of Pupil Services

## The Restorative Questions

for the one who caused harm:

What happened?

What were you thinking at the time?

What have you been thinking about since?

Who was impacted and how?

What needs to happen to make things right/better?

[www.akobenLLC.org](http://www.akobenLLC.org)





# ART THERAPY

OPEN TO ALL CUSD STUDENTS BY REFERRAL \*\*

REFERRALS CAN BE MADE BY FACULTY, PARENTS, GUARDIANS, & STUDENTS



MEET CUSD'S NEW ART THERAPIST, MS. AMANDA



ART THERAPY CAN PROVIDE A SAFE AND SUPPORTIVE ENVIRONMENT FOR STUDENTS TO EXPLORE AND EXPRESS THEIR THOUGHTS, FEELINGS, AND EXPERIENCES THAT ARE NOT ALWAYS ACCESSIBLE THROUGH WORDS.

**BENEFITS OF ART THERAPY:**

- \*Increase self esteem
- \*Regulate emotions
- \*Improve social skills
- \*Increase confidence
- \*Promote self-expression

SCAN ME FOR REFERRAL FORM



OR EMAIL BELOW

For more information please email [ASommerville@chesteruplandsd.org](mailto:ASommerville@chesteruplandsd.org)

## WHAT DOES A SCHOOL COUNSELOR DO?

**CORE CURRICULUM**

- Evaluate school and student data and outcomes
- Develop core curriculum to address desired student competencies
- Deliver curriculum systematically through classroom lessons in cooperation with classroom teachers

**INDIVIDUAL STUDENT PLANNING**

- Help students evaluate their own interests, abilities, and skills
- Help students develop personal goals
- Help students create plans for their futures

**RESPONSIVE SERVICES**

- Individual counseling
- Small group counseling
- Crisis response services

**INDIRECT SERVICES**

- Make referrals for outside counseling or assistance
- Consult with parents and teachers to share effective strategies that support students
- Collaborate with parents, professionals, and community members to support student success

**AND SO MUCH MORE!**



# Current responsive supports to students in conjunctions with the Office of Pupil Services



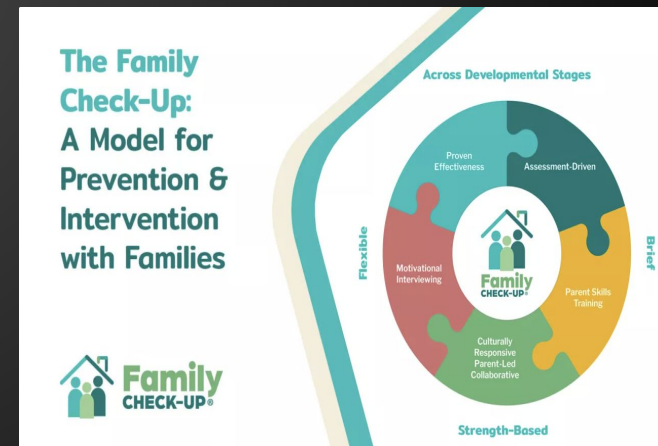
**School-Connect®** Curriculum Implementation & MTSS  
Success Skills for School & Life

### Curriculum Overview

Our curriculum is designed to give you everything you need to quickly and effectively dive into a variety of meaningful topics. Feel confident knowing the learning strategies in our lessons are backed by years of research, fine-tuning, and educator and student input to keep lessons engaging and inspiring.

School-Connect curriculum includes:

- CORE Lessons
- Lesson Boosters
- Parent/Family Resources
- Intervention Guides
- S-C Brain Science
- S-C Essentials



## Current responsive supports to students



Student Champions  
for  
Restorative Practices  
(CHS and Toby Farms)

Cozy Corner-calm down  
space for students at  
ESA Middle!

